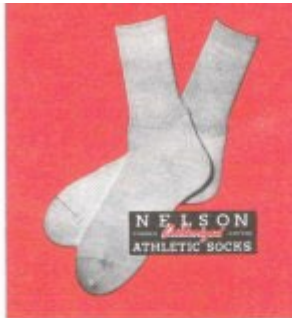


**FOR ECONOMY and
LONG WEAR**

ALWAYS ASK FOR...



CUSHIONIZED ATHLETIC

An all-purpose sock for sport or casual wear. Highest quality combed cotton yarn. "CUSHIONIZED" for comfort. Made in Fleecy White or Natural with Nylon reinforced toes and heels. Also in Stretch. One Size Fits 10-13.



RED HEEL ROCKFORD

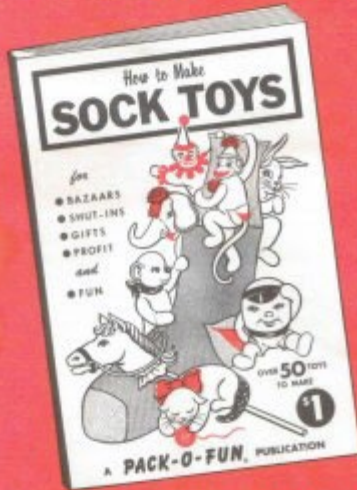
Two ply brown and white body, with three ply toes and heels. Gives comfort and long wear with economy. Genuine true rib top. Identified by the famous "NELSON RED HEEL MARK."



FLEECY WHITE WOOLS

Wool combinations in both STRETCH and sized styles. Shrink Controlled and Moth-proofed. Styles in every price class. All fleecy white and bulky-knit for foot comfort.

MAKE THESE OTHER SOCK TOYS



GET YOUR COPY NOW...

- Make Sock Toys for Bazaars, Shut-ins, Gifts, Profit and Fun
- 60 designs of Sock Animals, Dolls, Puppets and Novelties
- Step-by-step instructions and illustrations
- King-size, 8½ x 11 inch pages with easy-to-read type
- Written and published by Pack-O-Fun, The Only Scrap-Craft Magazine
- Only \$1 per copy . . . wonderful for anyone on your gift list

ORDER FROM:

PACK-O-FUN / DEPT. N / 14 Main Street / Park Ridge, Ill.

FREE INSTRUCTIONS

HOW TO MAKE THE SENSATIONAL

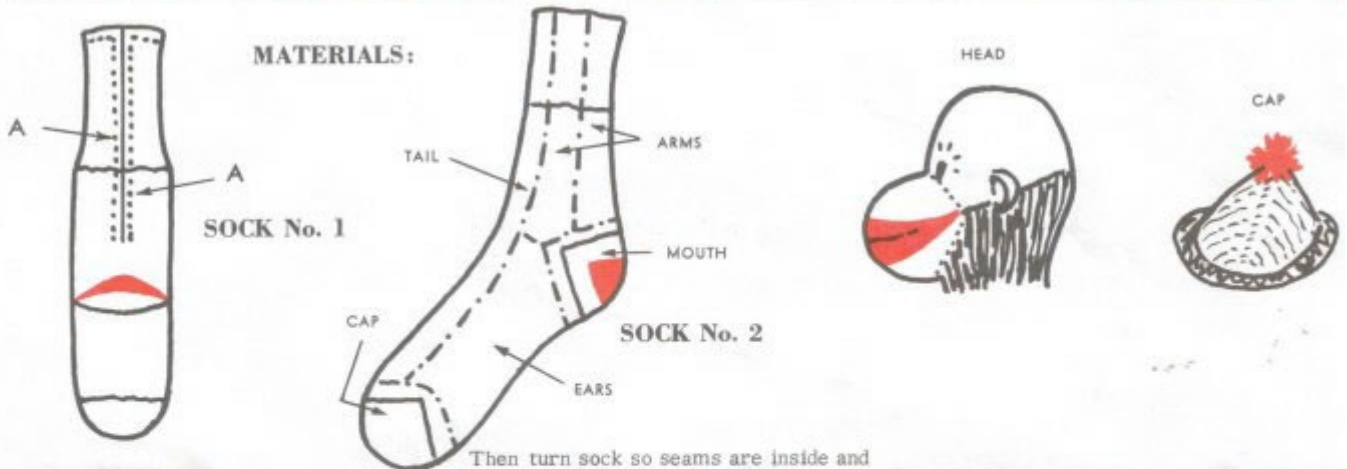


**RED HEEL
SOCK MONKEY
and SOCK ELEPHANT DOLL**



NK NELSON KNITTING COMPANY | 909 SOUTH MAIN STREET | ROCKFORD, ILLINOIS 61105

INSTRUCTIONS FOR MAKING THE SENSATIONAL MONKEY TOY



MATERIALS:

1. One pair NELSON Red Heel Rockford Socks.
2. Stuffing -- cut up old nylon stockings, hosiery waste, cotton batting, kapok or shredded foam rubber.
3. Red knitting yarn.

Turn sock inside out. Sew a seam (A) 1/2-inch on both sides of center of sock starting three inches from the white heel and across the end of top. Cut sock between seams and to within 1-1/2 inches of white heel. This leaves an opening in crotch.

Then turn sock so seams are inside and use crotch opening to stuff head, body and legs.

CAP: Cut off toe of the sock, leaving 1/2 inch of brown to roll for a brim.

TAIL: Cut a one inch strip the entire length of the front of the sock. Seam and stuff.

MOUTH: Cut the heel from the sock, leaving a brown edge around the white. Fasten on lower part of the face, whipping around the bottom; stuff and finish sewing around top. The mouth can be improved by a running stitch of either black or white across the middle.

ARMS: Cut the remaining upper part of the sock into two pieces. Seam and stuff.

EARS: Cut the ears from the remaining brown part of the sole of the sock.

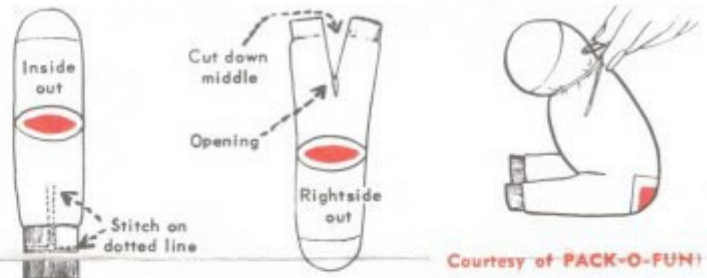
EYES: The eyes can be made either by sewing on buttons or by embroidering them with black thread. In this same operation a nose can be indicated by two small embroidered marks.

There are many variations from this basic pattern. Decorations can be either pompons, yarn or bells. Sometimes a fez is used for a cap. Jackets and skirts are also used for clothing the monkey.

SOCK ELEPHANT

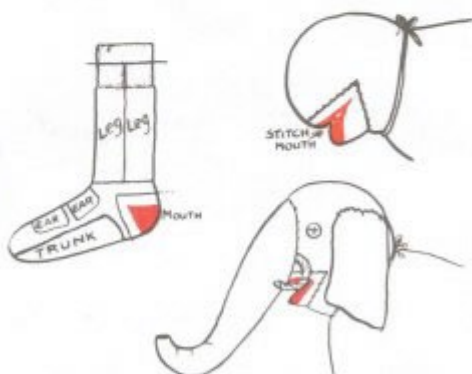
Turn inside out. Cut 1-1/2" off rib of sock. Starting 3" from heel, sew 1/8" seam on each side of center line and across end of ribbing. Cut sock between seams and about 1" farther to make opening for stuffing. Turn right side out.

To shape head, stuff foot of sock nice and plump, and tie off loosely at neck with ribbon. Insert ovals of cardboard in feet and stuff. Finish stuffing and sew up slit in crotch, making one seam on underside of body and the other up toward the tail.



Courtesy of PACK-O-FUN!

SOCK NO. 2



NELSON KNITTING COMPANY
Rockford, Ill.

LEGS: Cut as shown, about 5" long. Turn inside out, seam along one side and across foot. Insert pieces of cardboard in feet, stuff, and attach near front of body.

MOUTH: Cut off complete heel from second sock. Stuff lightly and sew to head. Stitch across center to shape mouth.

TRUNK: Open flat strip of sock so that it is about 1" at one end and 6" at the other. Round the wide end. Fold in half lengthwise, inside out, and seam along one edge and around narrow end. Turn rightside out and stuff. Sew to head just above mouth with seam underneath. To bend and hold trunk in various positions, insert a piece of wire through length of trunk. Insert pipe cleaner tusks.

EARS: For each ear, cut two pieces in shape of ears. Seam and turn rightside out. Sew on level with highest point of trunk.

EYES: Sew on round or oblong buttons set wide apart. For very small youngsters, embroider eyes.

TAIL: Make small short roll of material and sew in place.

TRIM is optional. A fringed strip of bright material can be placed over the back, or tassels may be sewn on. Rick-rack, little bells, ribbons or beads naturally give the toy a more festive, circus-like appearance.